

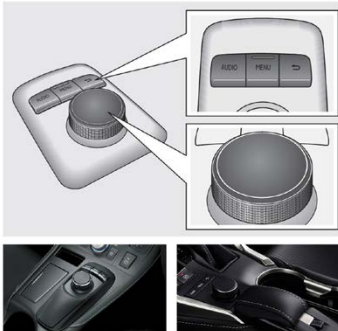
CAMERA CONNECTION CABLE

for Lexus with Enform GEN8
Media-Navigation System



ID: 866319

EXAMPLES OF STANDARD DEVICES FOR WHICH CABLE IS SUITABLE



The photo is provided for reference only. Appearance of the control panel and monitor may slightly differ depending on the car model.

DESCRIPTION

This cable allows you to arrange audio and video input in Lexus cars with GEN8 13CY/15CY EU media-navigation system without using a video interface. After the cable connection «AV input» icon is automatically activated in the monitor. Video in motion function will not be activated. Therefore, in order to watch video on the car monitor, it has to be parked first, and the hand brake must be on. As a result you receive fully functional AV input with possibility to connect composite video signal PAL/NTSC and also linear stereo signal.

Checking for compatibility is quite simple: if the joystick is shaped as a disk or a puck and the main menu is of the «carousel» type then you can use this cable in your car.

Thus you will be able to connect the video device, e.g. HD player, Android box, smartphone mirroring adapter or TV receiver to the OEM monitor without using the video interface. All OEM functions of the monitor will work in the same way as before.

The cable is connected to the 28-pin connector behind the main media box, where the radio receiver is installed. (check the connection diagram).

COMPATIBILITY

Model	Model years		Head unit	Additional compatibility conditions
	From	To		
CT200h	2014	2019	FujitsuTen GEN8 13CY/15CY EU 8th generation, car models of the EU market	Cars with OEM navigation system
ES250		2018		
ES300h	2015			
ES350				
IS200t	2014			2019
IS220d				
IS250				
IS300	2015	2018		Cars equipped with Lexus Display Audio Controller
IS300h				
NX200t	2014	2019		
NX300h				
RC200t	2015	2019		
RC300h				
RC F				
RX200t				

Note! This cable does not support video in motion function.

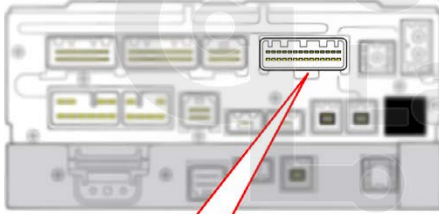
Note! Adjust image settings in the OEM media system menu after the cables were connected:

- Color system: PAL/NTSC.
- Output video signal aspect ratio: 4:3, 16:9, 16:10.
- Image brightness and contrast.

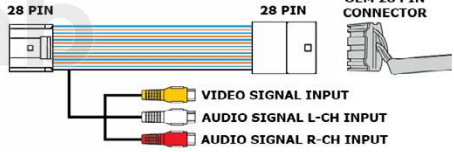
MANUALS

CONNECTION DIAGRAM FOR LEXUS GEN8 13CY WITH(WITHOUT) EXTERNAL NAVIGATION UNIT

BACK OF THE RADIO UNIT



28 PIN SOCKET FOR
CONNECTION VIDEO
CABLE



28 PIN

28 PIN

OEM 28 PIN
CONNECTOR

VIDEO SIGNAL INPUT

AUDIO SIGNAL L-CH INPUT

AUDIO SIGNAL R-CH INPUT



germeslab.com



Germes Lab



facebook.com/GermesLab



twittter.com/GermesLab



+852 397 33 882 (for English speaking users)

+1 323 7044 552 (for English speaking users)

+52 55 1163 8901 (para los usuarios que hablan español)

+55 61 4042 1515 (para os usuarios quem falam portugues)