

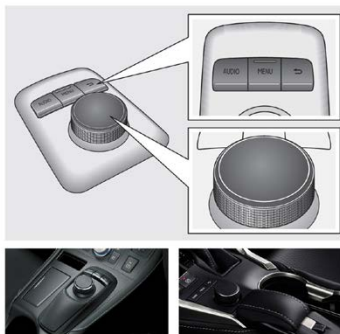
CAMERA CONNECTION CABLE

for Lexus with Enform GEN8
Media-Navigation System



ID: 885285

EXAMPLES OF STANDARD DEVICES FOR WHICH CABLE IS SUITABLE



The photo is provided for reference only. Appearance of the control panel and monitor may slightly differ depending on the car model.

DESCRIPTION

Cable for rear view camera connection in Lexus cars with Enform GEN8 US market media-navigation systems. Using this cable you will be able to install an aftermarket camera Plug&Play without damaging the car wires. This cable can be used in cars with or without OEM navigation system.

Checking for compatibility is quite simple: if the joystick is shaped as a disk or a puck and the main menu is of the «carousel» type then you can use this cable in your car.

Image from the rear view camera will automatically be displayed on the screen when reversing. The device is connected to the 24-pin socket (as shown in the connection diagram). Depending on your car radio model, this socket may be located in a different place from the one shown in the diagram. After connection all OEM devices that work using this socket will not be disturbed and will continue to work as they did prior to the connection. PDC function (combined with OEM parctronic system) is supported.

Note! The additionally installed rear view camera should be powered from ACC line (first turn of the key), otherwise the camera input will be not active. Depending on the type of the camera to be connected, namely on the voltage required for the camera, you can use input voltage +6 V, which the monitor produces. In case the camera requires more than +6 V, connect the camera power to ACC line.

COMPATIBILITY

Model	Model years		Head unit	Additional compatibility conditions
	From	To		
CT200h	2014	2019	Lexus Enform GEN8 with Pioneer head unit car models of US/CA/BR markets	Cars with OEM navigation system
ES250		2018		
ES300h				
ES350	2015			2019
IS200t				
IS220d	2014			
IS250				
IS300	2015			
IS300h				
NX200t	2014	2018		Cars equipped with Lexus Display Audio Controller
NX300h				
RC200t	2015			
RC300h				
RC F				
RX200t		2019		

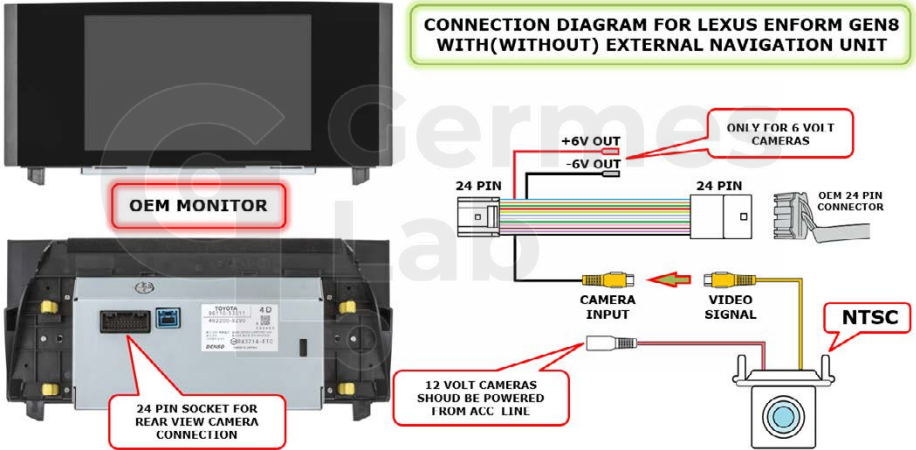
Note! Only NTSC cameras are supported.

Note! FujitsuTen head units are not supported.

Note! Head units with microSD card navigation are not supported.

MANUALS

CONNECTION DIAGRAM FOR LEXUS ENFORM GEN8 WITH(WITHOUT) EXTERNAL NAVIGATION UNIT





germeslab.com



Germes Lab



facebook.com/GermesLab



twitttter.com/GermesLab



+852 397 33 882 (for English speaking users)

+1 323 7044 552 (for English speaking users)

+52 55 1163 8901 (para los usuarios que hablan español)

+55 61 4042 1515 (para os usuarios quem falam portugues)